

MAP TO THE ESTONIAN SUMMER CAMP (SEEDRIORU)

From Toronto, take the 401 West to Highway 6 North , exit 295 (A few kilometers past the Highway 6 South Exit).

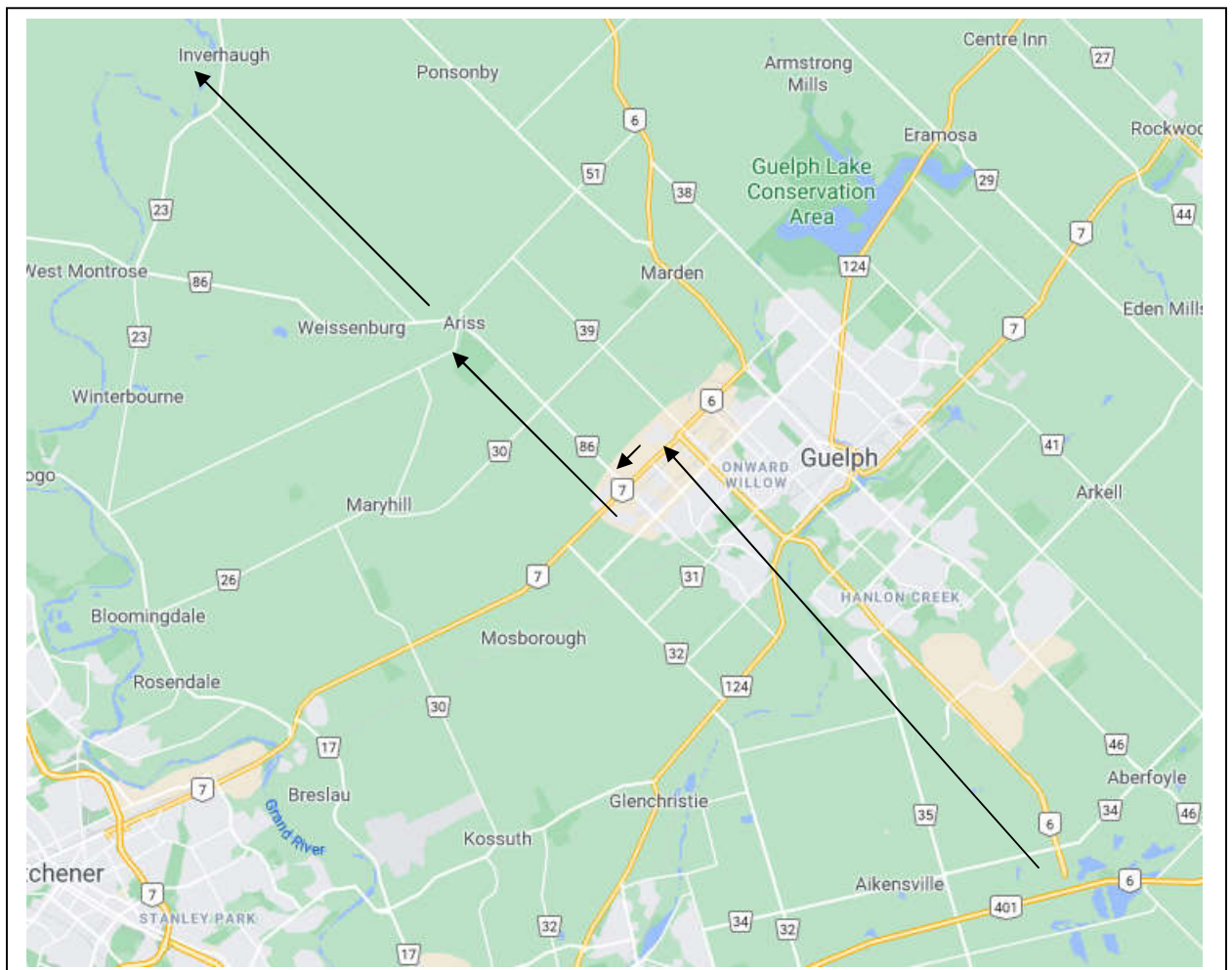
Continue on Highway 6 North until you reach Woodlawn Road.

Turn left onto Woodlawn Road

Turn right at Elmira Road North (aka Wellington Road 86).

Continue past 2 sets of lights and then look for Eighth Line on your right.

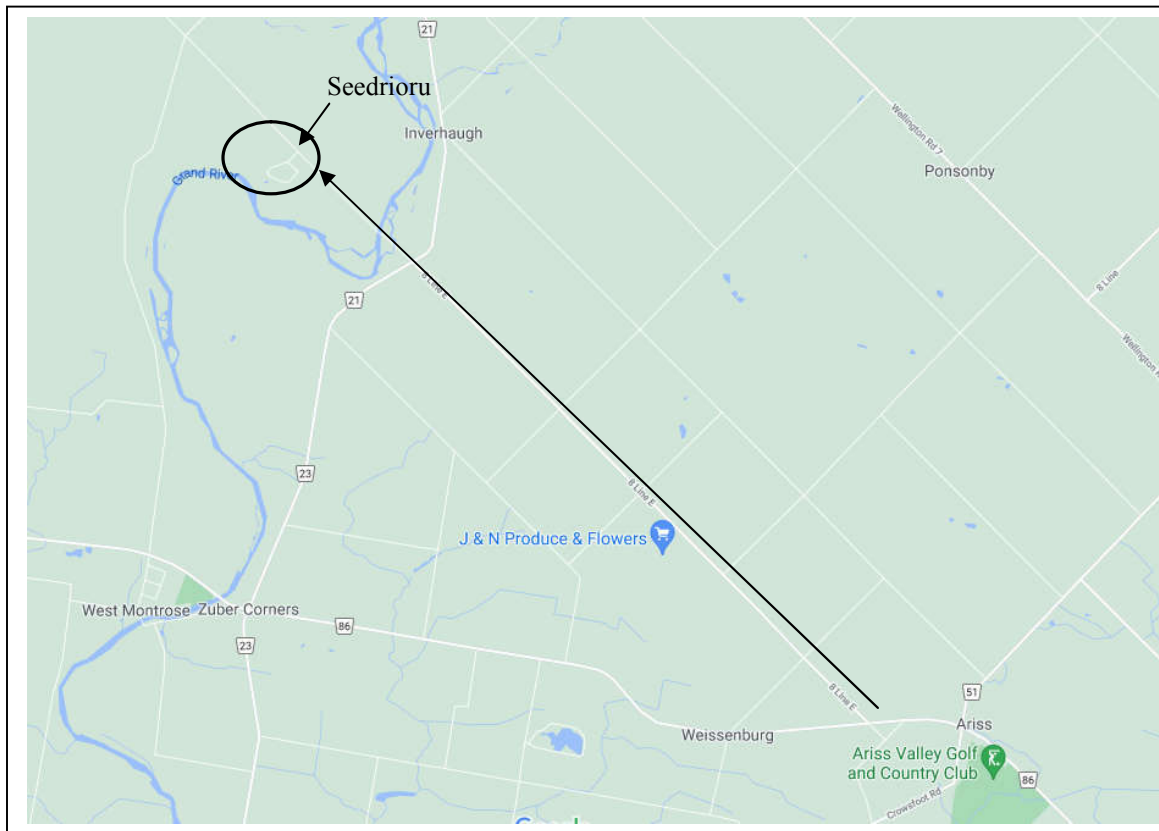
Turn Right on Eighth Line



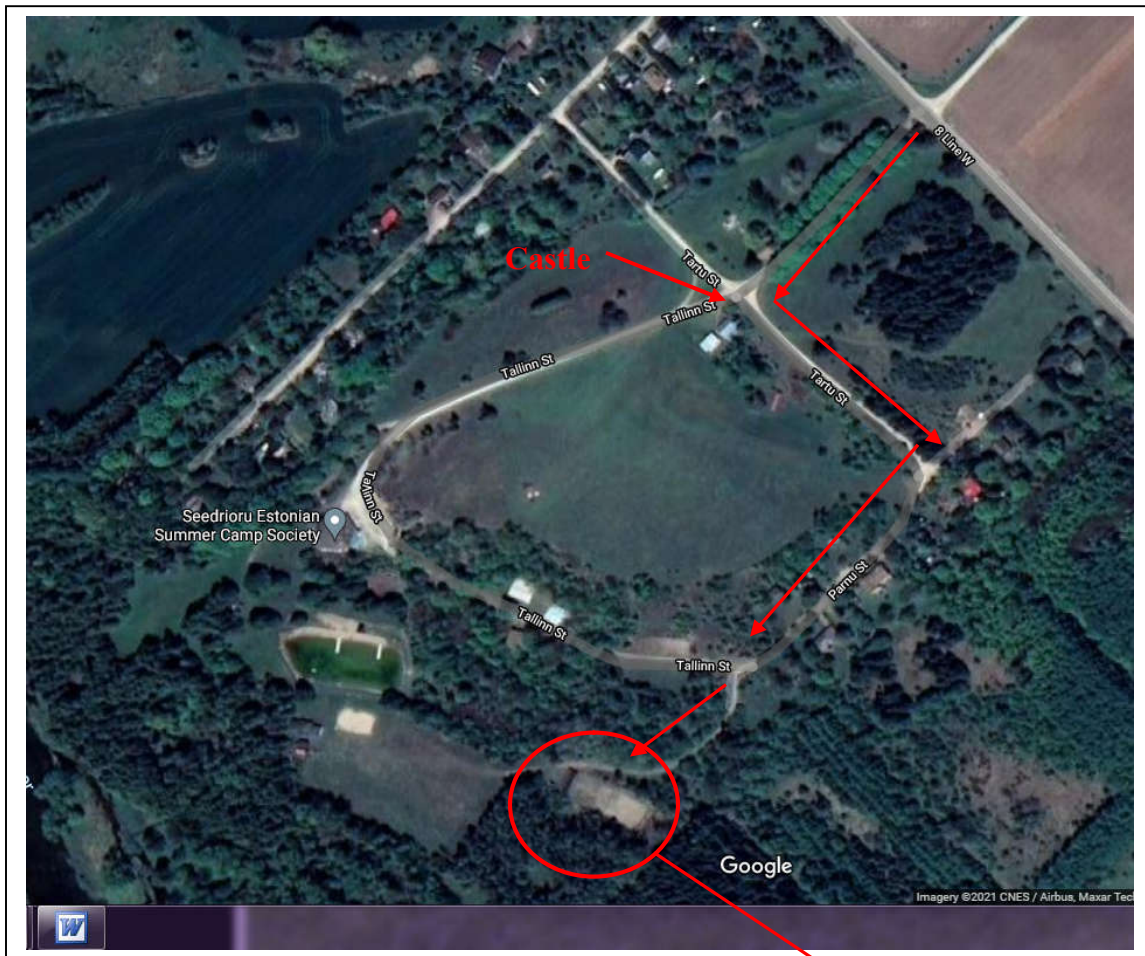
Once you are on Eighth Line

Continue past the Stop sign at Katherine St. (Wellington Road 21)

Go over the bridge at the Grand River and Seedrioru will be a bit further on your left



To find the range within the summer camp complex:
Turn left at the castle turret immediately after entering the main gate.
Turn right at the T-intersection and drive down hill into the valley
Follow this road until you get to the fork in the road. There will be some steel gates at this point.
Turn left at the fork.
The range will be on the left.



RANGE

From the Website

The directions to the Seedriuru summer camp itself are at the bottom of their webpage: <https://seedriuru.com/web2/about-us/kontakt/?lang=et> (link fixed). The general location is near the Elora Gorge.